

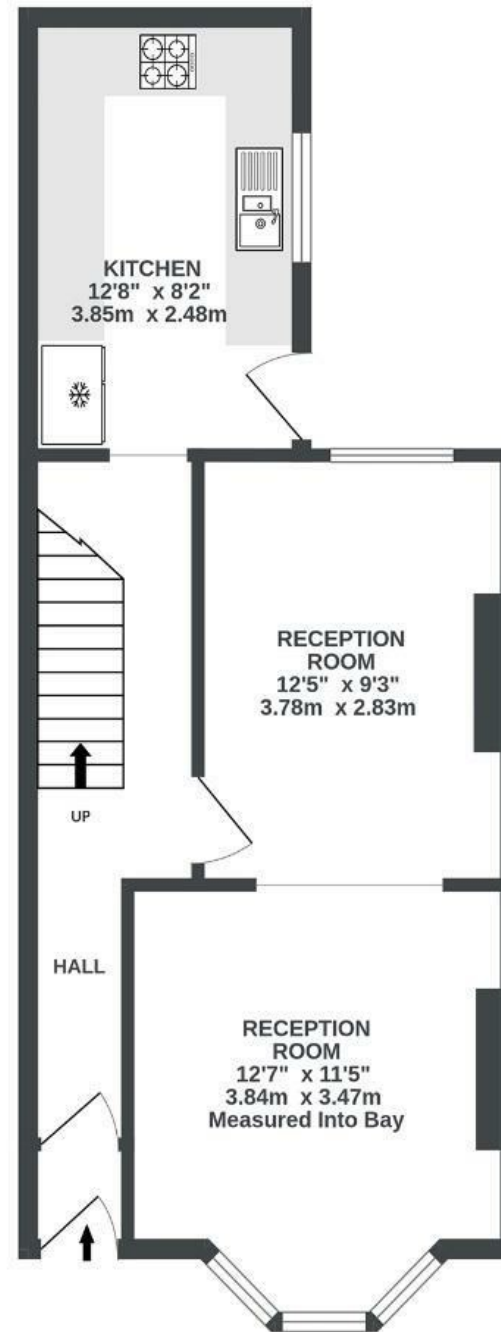
New Queen Street

KINGSWOOD

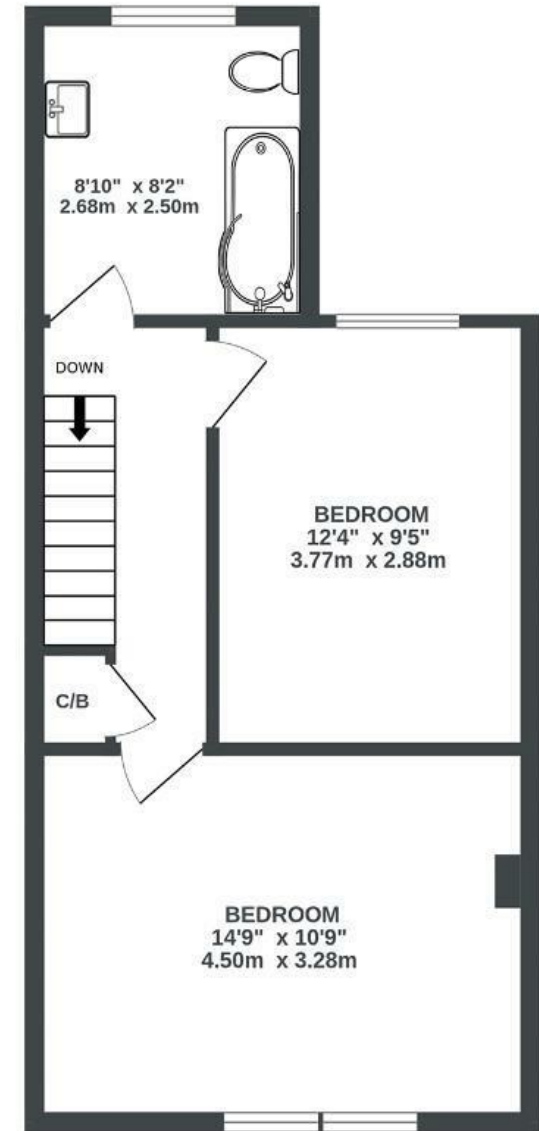
APPROXIMATE FLOOR AREA
78.6 SQM / 847 SQFT



GROUND FLOOR
434 sq.ft. (40.4 sq.m.) approx.



1ST FLOOR
412 sq.ft. (38.3 sq.m.) approx.



Illustrations are for reference purposes only, measurements are approximate, not to scale.

Boardwalk

New Queen

KINGSWOOD, BRISTOL

£

£310,000



BS15 1DE

zzz

2 Bedrooms



1 Bathrooms

"We've loved living in this charming Victorian end of terrace house. It's full of character, with high ceilings, big windows, and plenty of natural light thanks to being on the end. The rooms feel bright and welcoming, and it's been a really comfortable and happy home for us."

One of the things we've enjoyed most is the location. We're just a short walk from the Bristol-Bath Cycle Path, which is perfect for cycling or weekend strolls, and we have a fantastic local pub just round the corner."

